

# GEOLOGIC MAP OF THE ARIZONA SPRING QUADRANGLE, ELKO COUNTY, NEVADA

G. Kendall Taylor<sup>1</sup>, Arthur W. Snoke<sup>2</sup>, Seth Dee<sup>3</sup>, Keith A. Howard<sup>4</sup>, and Charles H. Thorman<sup>4</sup>

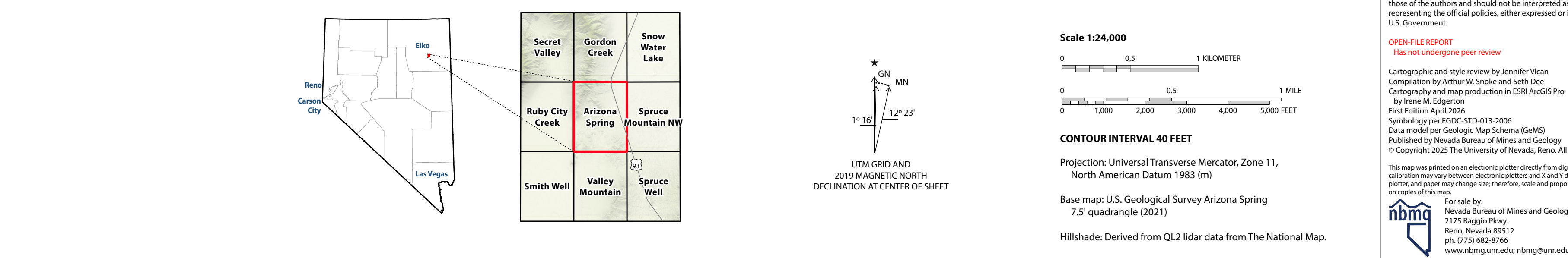
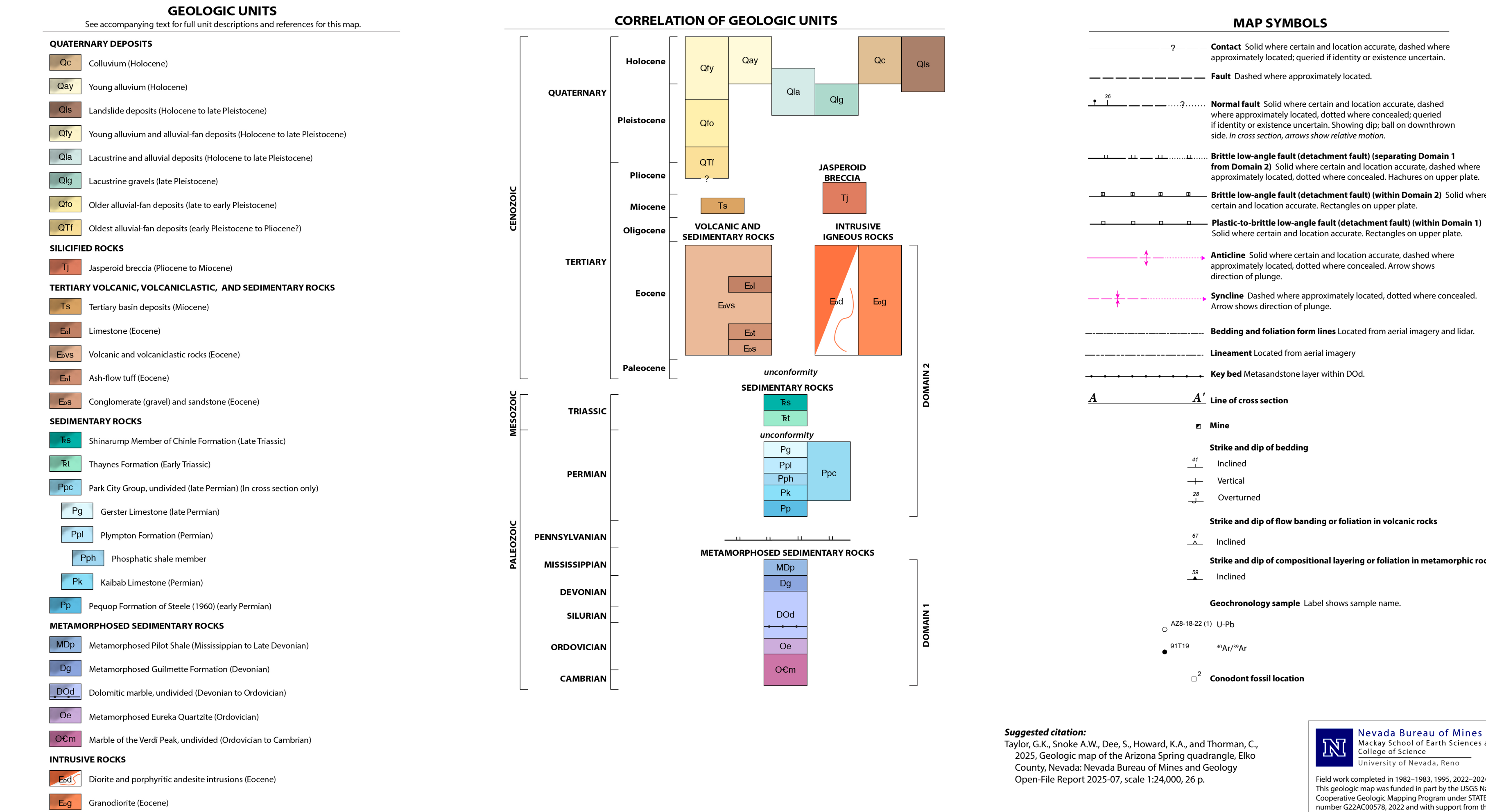
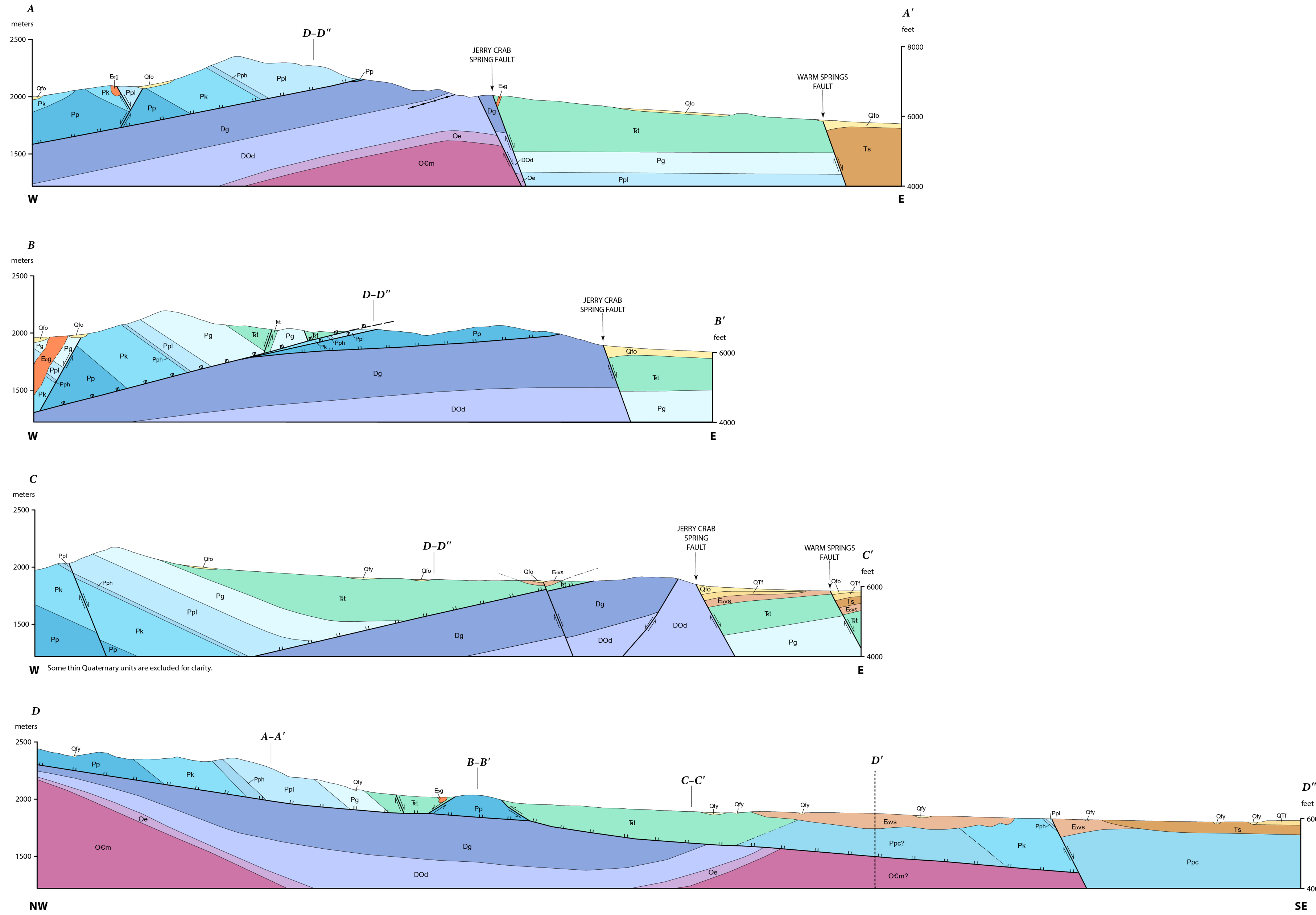
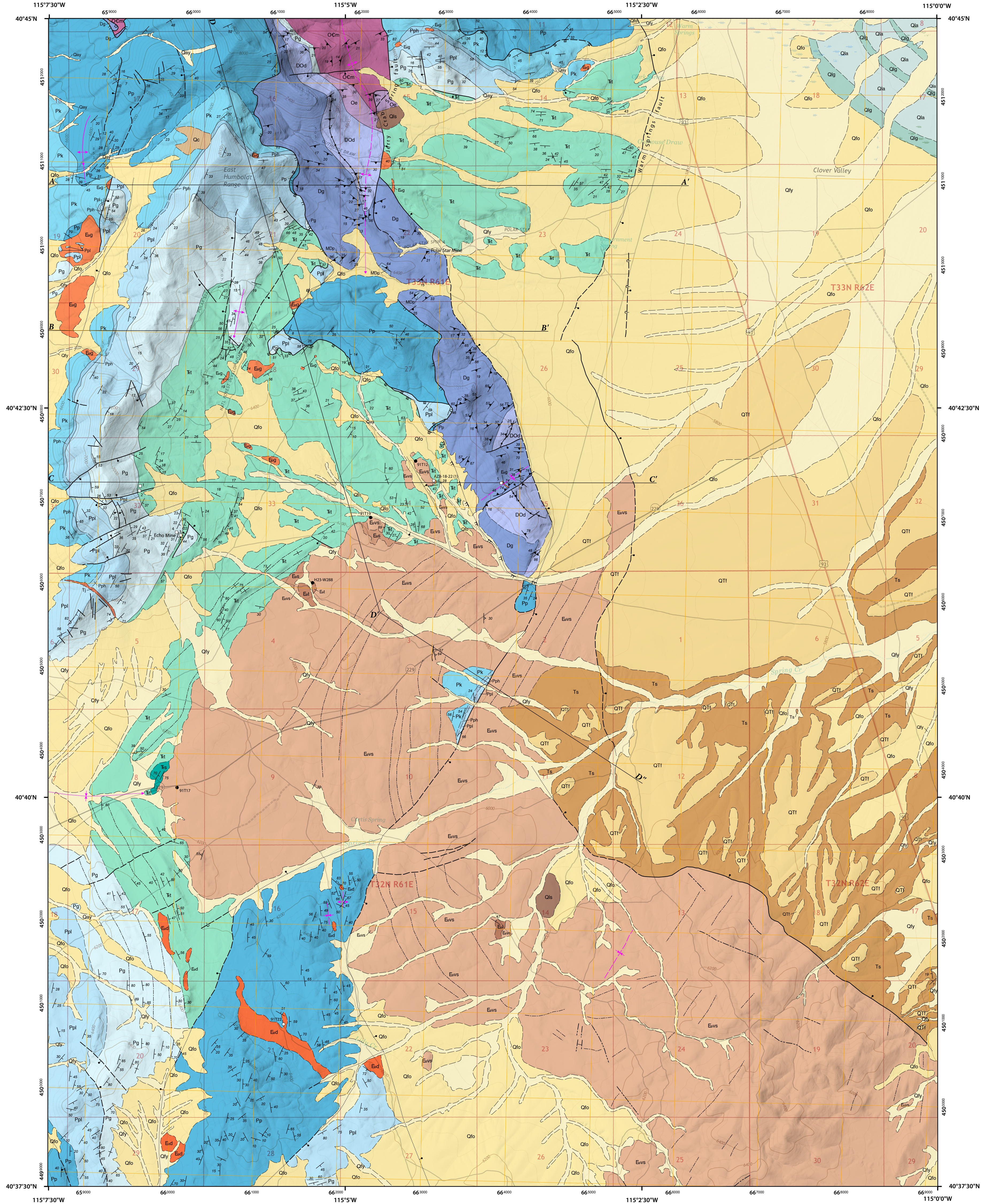
<sup>1</sup> South Carolina Department of Environmental Services

<sup>2</sup> University of Wyoming, Laramie, WY

<sup>3</sup> Nevada Bureau of Mines and Geology, University of Nevada, Reno

<sup>4</sup> Independent Geologist

2025



**Suggested citation:**  
Taylor, G.K., Snoke, A.W., Dee, S., Howard, K.A., and Thorman, C.,  
2025, Geologic map of the Arizona Spring quadrangle, Elko  
County, Nevada: Nevada Bureau of Mines and Geology  
Open-File Report 2025-07, scale 1:24,000, 26 p.

**OPEN-FILE REPORT**  
Has not undergone peer review

Cartographic and style review by Jennifer Vican  
Compilation by Arthur W. Snoke and Seth Dee  
Cartography and map production in ESRi ArcGIS Pro  
by Renee M. Edgerly  
First Edition April 2026  
Symbolized per GDC-311-313-2006  
Data model per Geographic Map Schema (GMS)  
Published by Nevada Bureau of Mines and Geology  
© Copyright 2025 The University of Nevada, Reno. All Rights Reserved.

This map was printed on an electronic plotter directly from digital files. Dimensional  
accuracy may vary between electronic plots and hard-copy prints on the same  
paper, and paper may change size; therefore, scale and proportions may not be exact  
on copies of this map.

For sale by:  
Nevada Bureau of Mines and Geology  
2175 Regatta Place  
Reno, Nevada 89512  
ph. (775) 682-8766  
www.nbmng.unr.edu nbmng@unr.edu

**Scale 1:24,000**  
0 0.5 1 KILOMETER  
0 0.5 1 MILE  
0 1,000 2,000 3,000 4,000 5,000 FEET

**CONTOUR INTERVAL 40 FEET**

Projection: Universal Transverse Mercator, Zone 11,  
North American Datum 1983 (m)

Base map: U.S. Geological Survey Arizona Spring  
7.5' quadrangle (2021)

Hillshade: Derived from QL2 lidar data from The National Map.